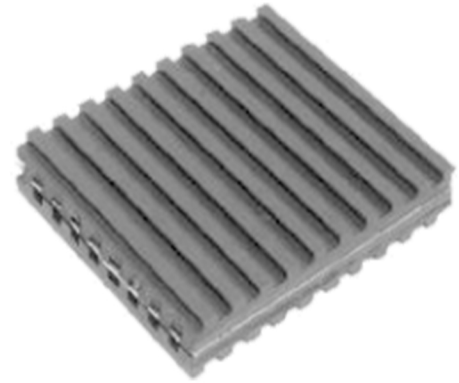


METAL SANDI WCH PAD

Specification:

- Metal Sandwich Pads are constructed of a steel plate bonded
- Ribbed Anti Vibration Pads.
- Designed for very high load capacity.



Product Code	Size (Inch)	Load (PSI)	Load (Kg/cm ²)
MSP 01	1" x 18" x 18"	19440	1368
MSP 02	1" x 12" x 12"	8640	607
MSP 03	1" x 8" x 8"	3840	270
MSP 04	3/4" x 6" x 6"	2160	152
MSP 05	3/4" x 4" x 4"	960	67
MSP 06	3/4" x 3" x 3"	540	38