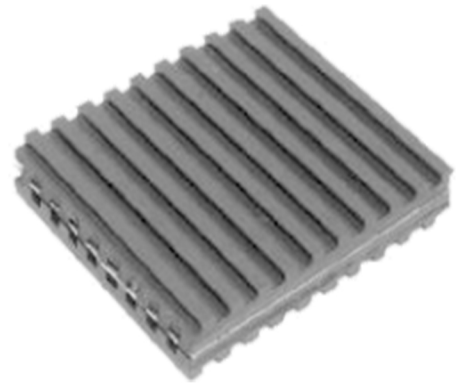


# CORK SANDI WCH PAD

## Specification:

- Cork sandwich Pads are laminated pads having 1/2" thick close grained cork securely bonded between two layers of 1/4" alternate low high ribbed Neoprene rubber pads.
- Offers highest level of sound attenuation and vibration isolation.
- No need for bolting.



Product Code	Size (Inch)	Load (PSI)	Load (Kg/cm <sup>2</sup> )
CSP 01	7/8" x 18" x 18"	16200	1139
CSP 02	7/8" x 12" x 12"	7200	7200
CSP 03	7/8" x 8" x 8"	3200	225
CSP 04	7/8" x 6" x 6"	100	126
CSP 05	7/8" x 4" x 4"	860	56
CSP 06	7/8" x 3" x 3"	450	31